

# Flat 84 26 Viewforth Edinburgh EH10 4FF



2

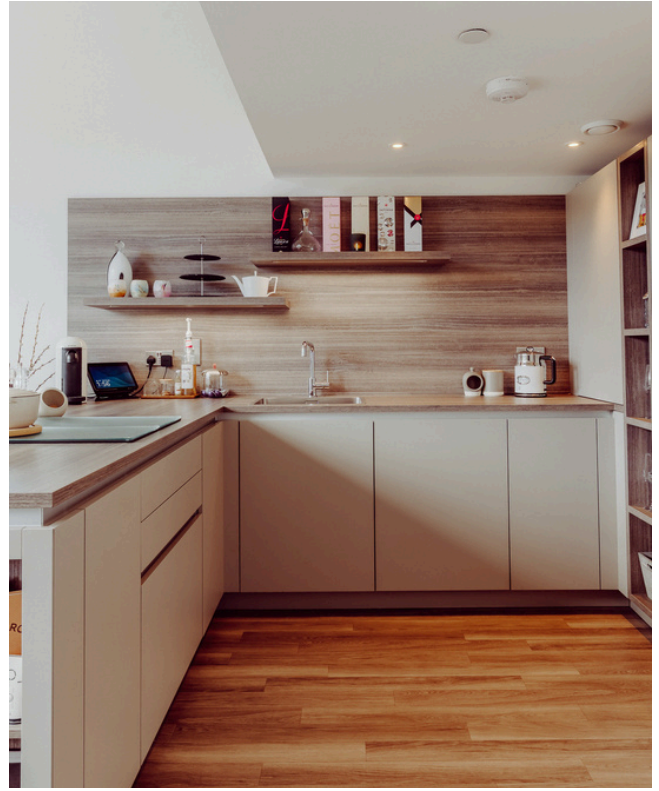


2

Step into luxury living with this 2 bedroom main door flat located on the top floor of a prestigious building. As you enter, be captivated by the grandeur of the 6-metre ceiling height in the open plan living kitchen, creating a sense of space and sophistication. This former show home apartment is meticulously designed, finished with high quality fittings throughout such as electrical blinds and solar based velux windows. This is truly a turn key home which is ready to move straight into.







## Set in a B listed building, formerly the Boroughmuir High School

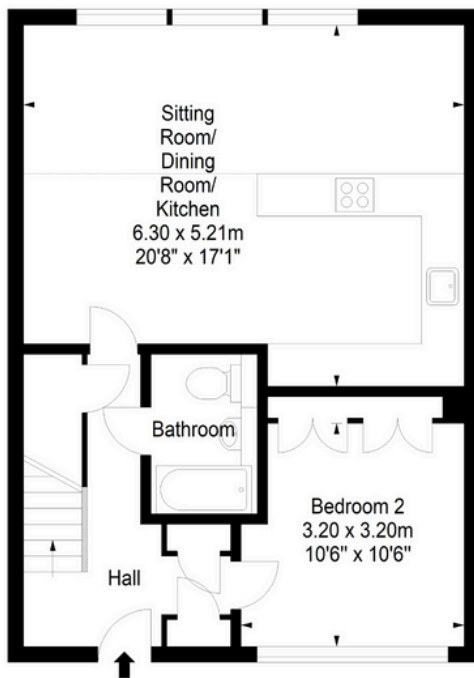
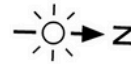
- Allocated parking & EV charging
- Former show home apartment
- Beautifully presented throughout
- 2 double bedrooms
- 6 meter high ceilings in the living kitchen
- House bathroom & en-suite
- Main door
- Sought-after neighbourhood
- Communal grounds
- B listed building

# Flat 84, 26 Viewforth, Edinburgh, EH10 4FF

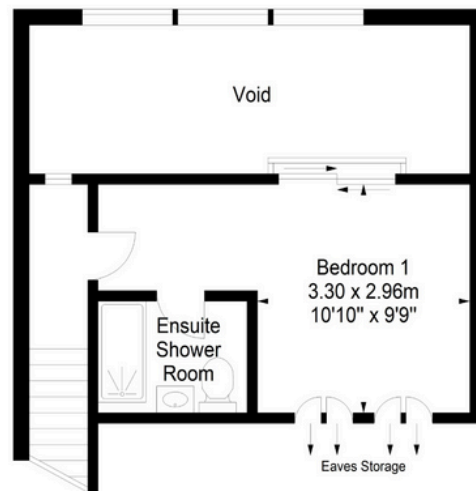
**Viewforth,  
Edinburgh, EH10 4FF**



Approx. Gross Internal Area  
77.85 Sq M - 838 Sq Ft  
For identification only. Not to scale.  
© SquareFoot 2025



Top Floor



Mezzanine

Illustration for identification purposes only, measurements are approximate, not to scale

**To arrange a viewing, call  
+44(0)131 287 5500 or email us  
at [hello@niksenproperty.com](mailto:hello@niksenproperty.com)**