

51/1 Rattray Drive Edinburgh EH10 5TH

A solid, well-built home with the right mix of comfort and functionality. Built by CALA, this exclusive and spacious two-bedroom, two-bathroom apartment stands out for its genuinely well-considered layout and generous proportions throughout. Every room feels intentionally designed — there's no wasted space, no awkward corners, just a smooth, practical flow that makes day-to-day living effortless.



2



2



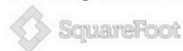


Perfect move-in condition

- Spacious ground floor apartment
- 2 double bedrooms
- Ensuite and house bathroom
- Allocated parking to the front
- Excellent storage
- Exclusive CALA residential development
- Well-maintained communal gardens
- Flooded with natural light

51/1 Rattray Drive Edinburgh, EH10 5TH

Rattray Drive,
Edinburgh, EH10 5TH



Approx. Gross Internal Area
97.45 Sq M - 1049 Sq Ft
For identification only. Not to scale.
© SquareFoot 2025

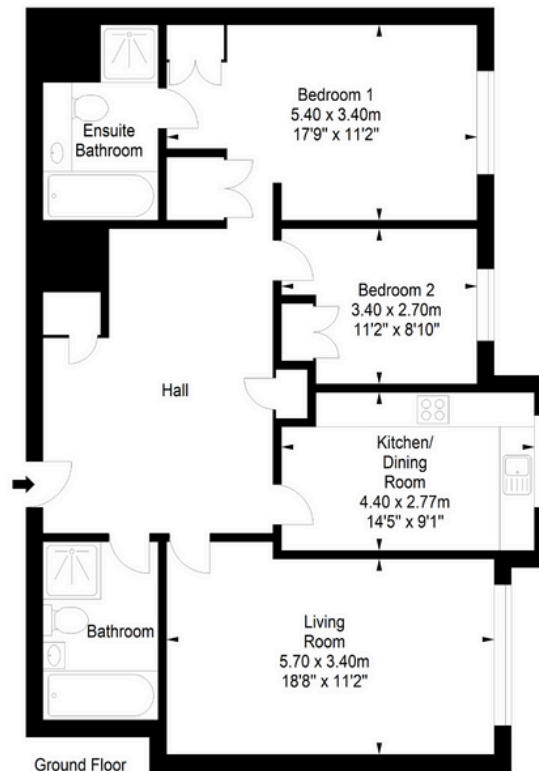


Illustration for identification purposes only, measurements are approximate, not to scale

To arrange a viewing, call
+44(0)131 287 5500 or email us
at **hello@niksenproperty.com**