

4a Morningside Place Edinburgh EH10 5ER

Steps away from Morningside, sitting proudly is this Victorian stone built home. Brimming with period features, high ceilings and flooded with natural light through sash and case windows. The accommodation is both spacious and versatile, ideal for growing families or those looking to create a long-term home.



4



3





Victorian charm and impressive views

- Amazing views over the Pentland Hills
- 4 Bedrooms
- 3 Bathrooms
- Handmade kitchen
- 2 wood burning stoves
- Brimming with period features
- Within a minutes walk of Morningside
- Private garden

4a Morningside Place Edinburgh, EH10 5ER

**Morningside Place,
Edinburgh, EH10 5ER**



Approx. Gross Internal Area
222.68 Sq M - 2397 Sq Ft
Approx. Gross Internal Area
2.16 Sq M - 23.25 Sq Ft
For identification only. Not to scale.
© SquareFoot 2025

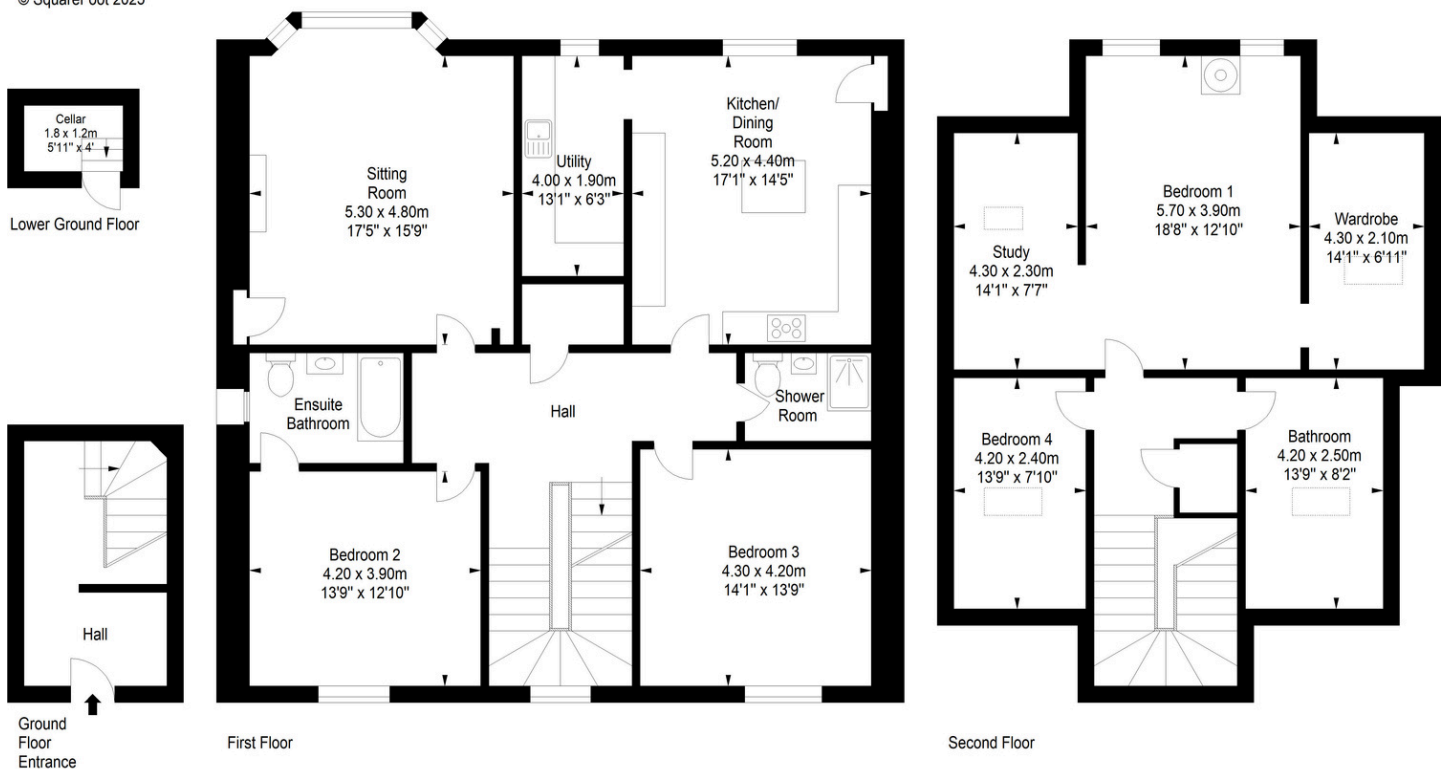


Illustration for identification purposes only, measurements are approximate, not to scale

**To arrange a viewing, call
+44(0)131 287 5500 or email us
at hello@niksenproperty.com**