

2 Newlandrig, Vogrie, EH23 4NS

Sat in 1 acre, this 4 bedroom detached family home offers a tranquil escape. The accommodation is both spacious and versatile and the home takes full account of what family life truly entails and provides for its needs.



4



2

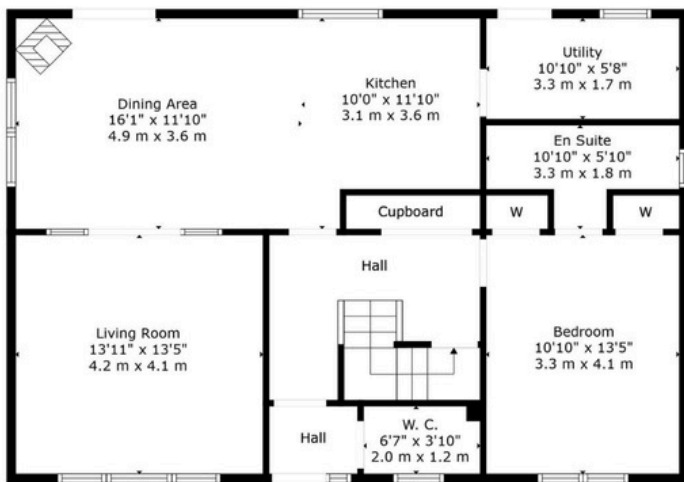




The perfect blend of indoor comfort and outdoor charm

- Detached property sat in 1 acre
- 4 double bedrooms
- House bathroom & en-suite
- Workshop & storage space
- Manicured garden and paddock
- Wood burning stove
- Thoughtfully presented throughout
- Tranquil countryside location

2 Newlandrig Vogrie, EH23 4NS



Floor 1



Floor 2



TOTAL: 1583 sq. ft, 147 m2

FLOOR 1: 956 sq. ft, 89 m2, FLOOR 2: 627 sq. ft, 58 m2
EXCLUDED AREAS: LOW CEILING: 55 sq. ft, 6 m2

All Measurements Are Calculated By Cubicasa Technology - Deemed Highly Reliable But Not Guaranteed. Visit Our Website - <https://www.filmworx.co.uk>

Illustration for identification purposes only, measurements are approximate, not to scale

To arrange a viewing, call
+44(0)131 287 5500 or email us
at hello@niksenproperty.com