

17/1 Rothesay Terrace Edinburgh EH3 7RY

This well presented, main door 1 bedroom flat forms part of a Victorian stone built townhouse. Located to the rear of the building, off a quiet street, this home is in move in condition.

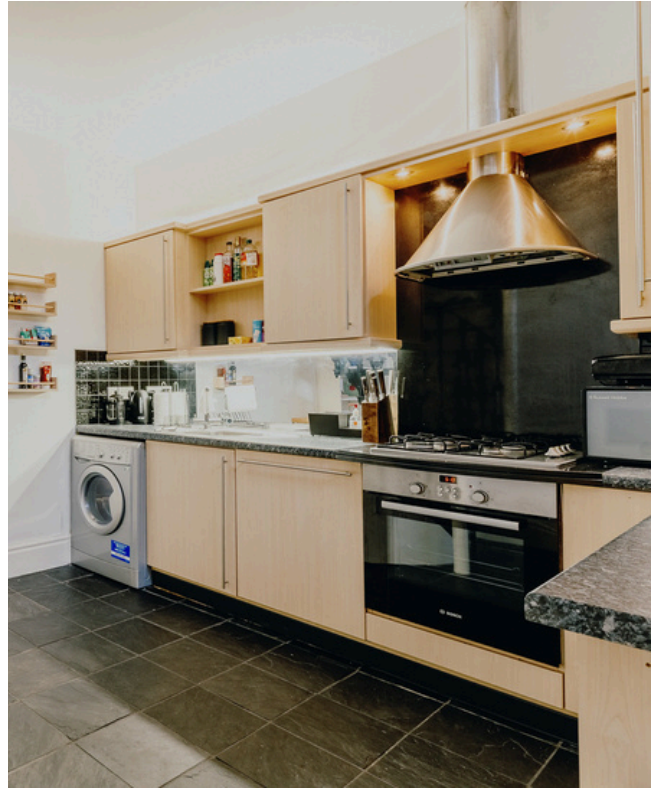


1



1





City pad in a prime central location

- Central West End location
- Main door
- 1 Bed
- Well presented throughout
- Desirable neighborhood
- Within walking distance of everything you might need

17/1 Rothesay Terrace Edinburgh, EH3 7RY

Approx. Gross Internal Area
45.18 Sq M / 487 Sq Ft.
Not to scale. For identification only.
© www.planography.co.uk

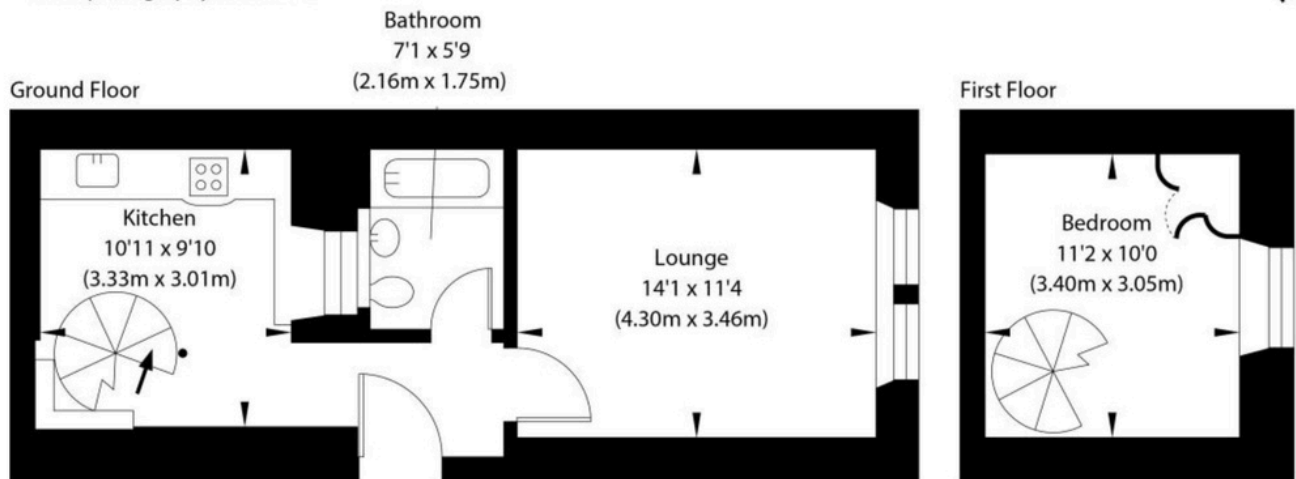


Illustration for identification purposes only, measurements are approximate, not to scale

To arrange a viewing, call
+44(0)131 287 5500 or email us
at hello@niksenproperty.com